

# Maritime Safety Queensland



*Baxters Jetty, Shorncliffe*

# Beacon to Beacon Guide

## Moreton Bay

### Published by

Maritime Safety Queensland

© Copyright The State of Queensland  
(Department of Transport and Main Roads) 2014



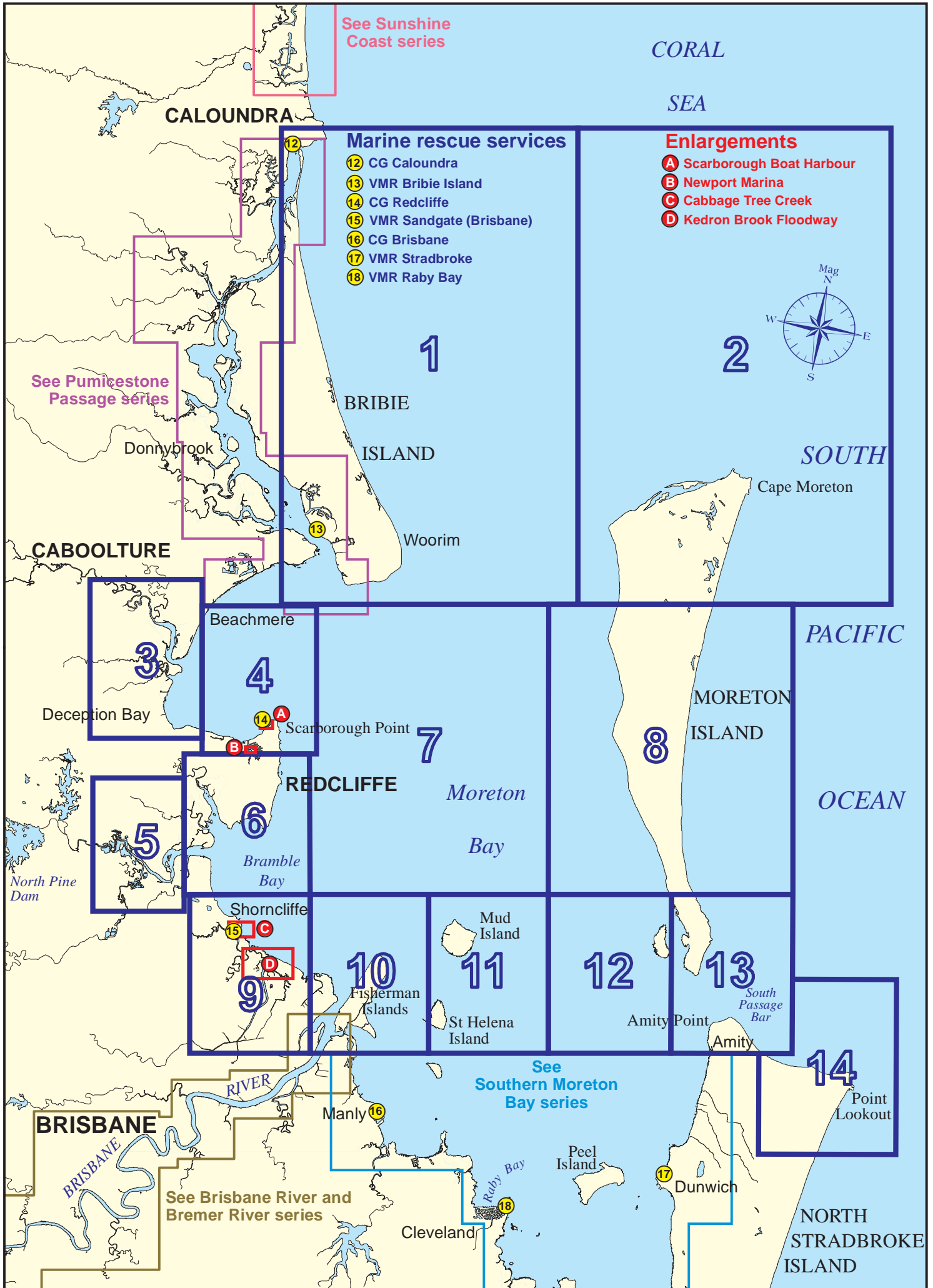
To view a copy of this licence, visit  
<http://creativecommons.org/licenses/by/3.0/au>

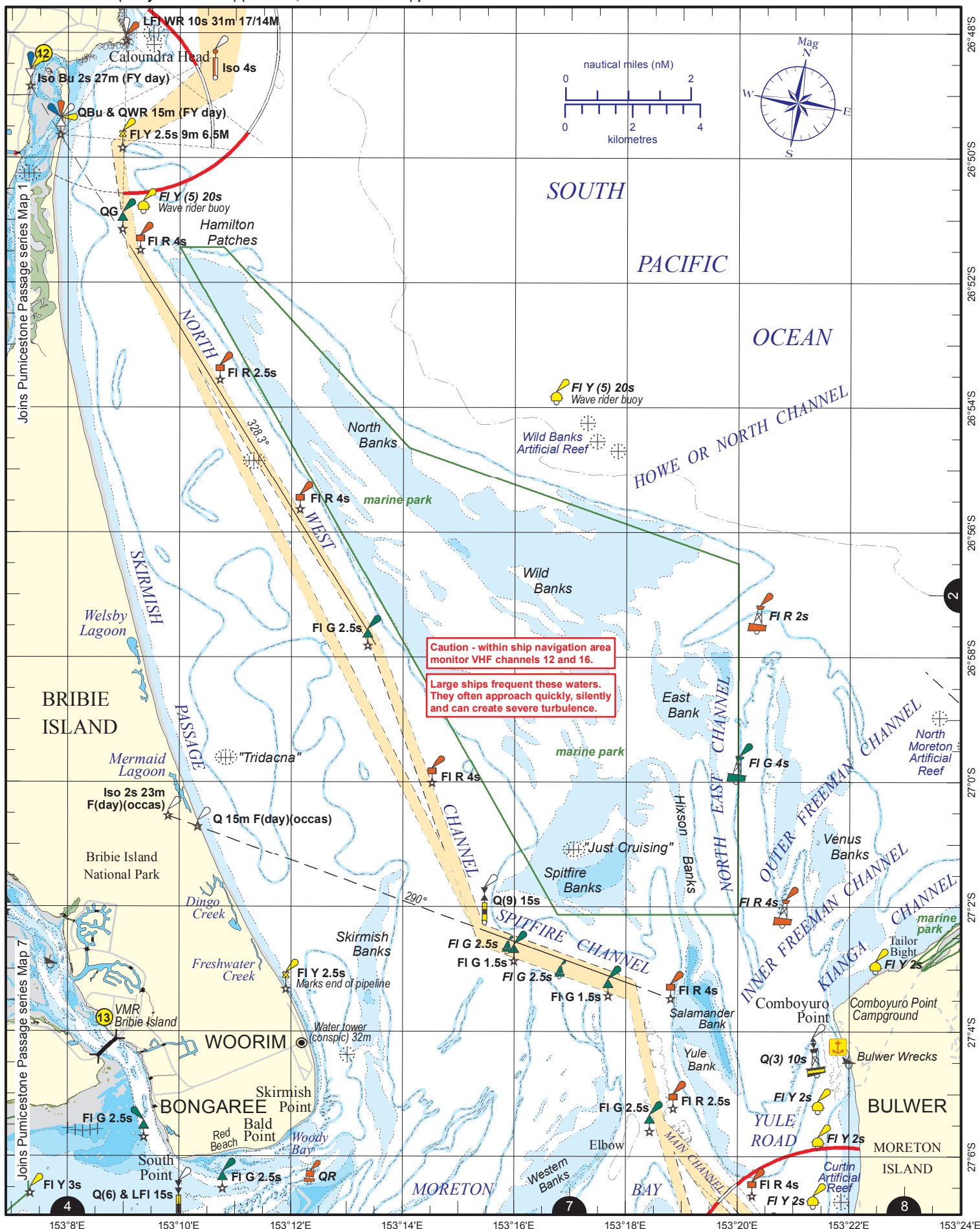
### For commercial use terms and conditions

Please visit the Maritime Safety Queensland  
website at [www.msq.qld.gov.au](http://www.msq.qld.gov.au)

### 'How to' use this guide

Use this Beacon to Beacon Guide with  
the 'How to' and legend booklet available from  
[www.msq.qld.gov.au](http://www.msq.qld.gov.au)





Always keep a proper lookout when boating.

Look up and live for power and cable crossings that may not be shown on these maps due to scale or recent construction.

**CAUTION:** depth contours have not been re-surveyed in most areas since the 2011 and 2013 floods.

Exercise care when travelling outside suggested navigation tracks.

Nautical information current to 16 June 2014.

© Copyright The State of Queensland 2014

Queensland Department of Transport and Main Roads - Maritime Safety Queensland.

To reproduce any map within this series, see terms and conditions at Maritime Safety Queensland's website ([www.msq.qld.gov.au](http://www.msq.qld.gov.au))







**Exercise care when travelling outside suggested navigation tracks.**





Queensland  
Government

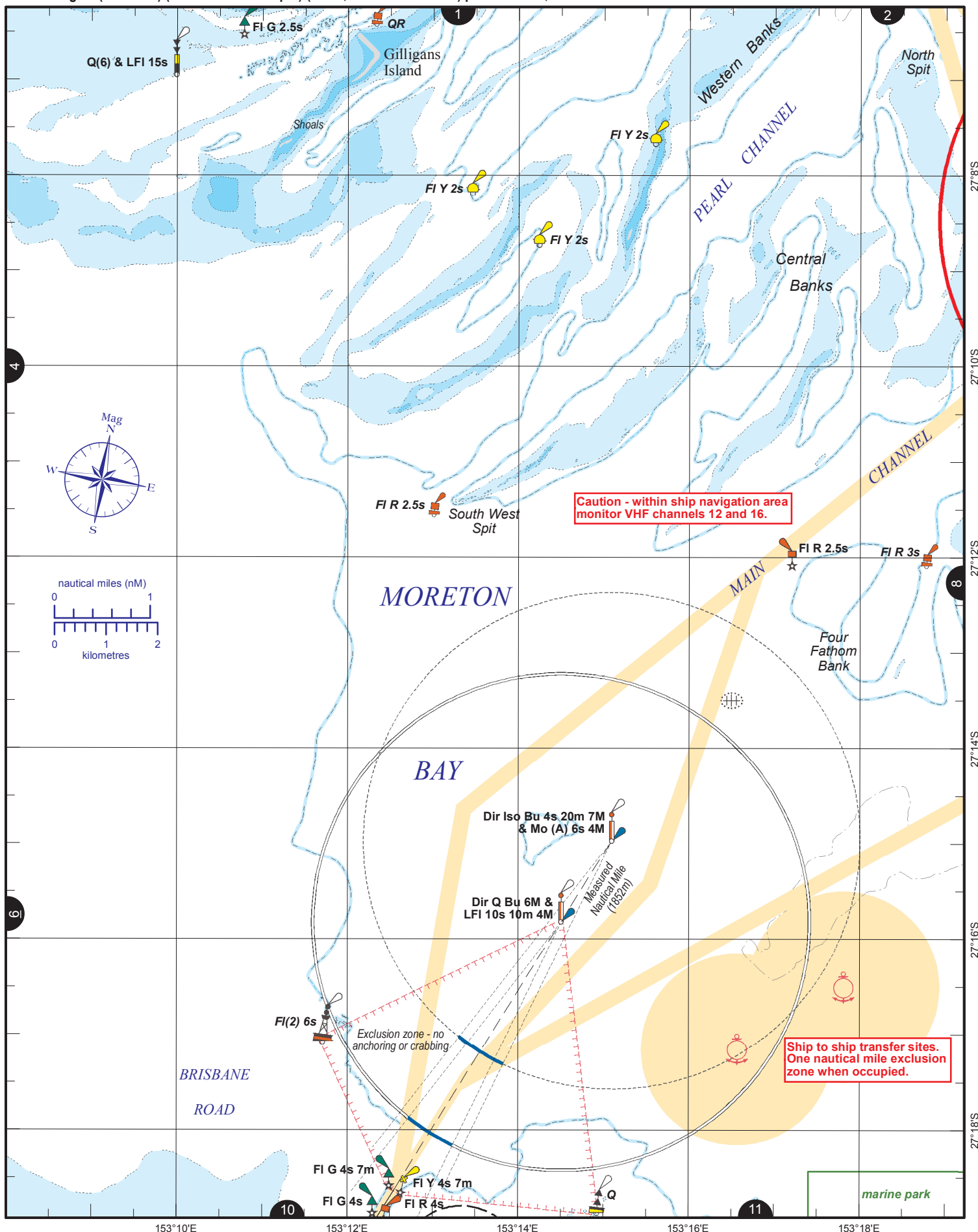












Always keep a proper lookout when boating.

**Look up and live** for power and cable crossings that may not be shown on these maps due to scale or recent construction.

**CAUTION: depth contours have not been re-surveyed in most areas since the 2011 and 2013 floods.**

**Exercise care when travelling outside suggested navigation tracks.**

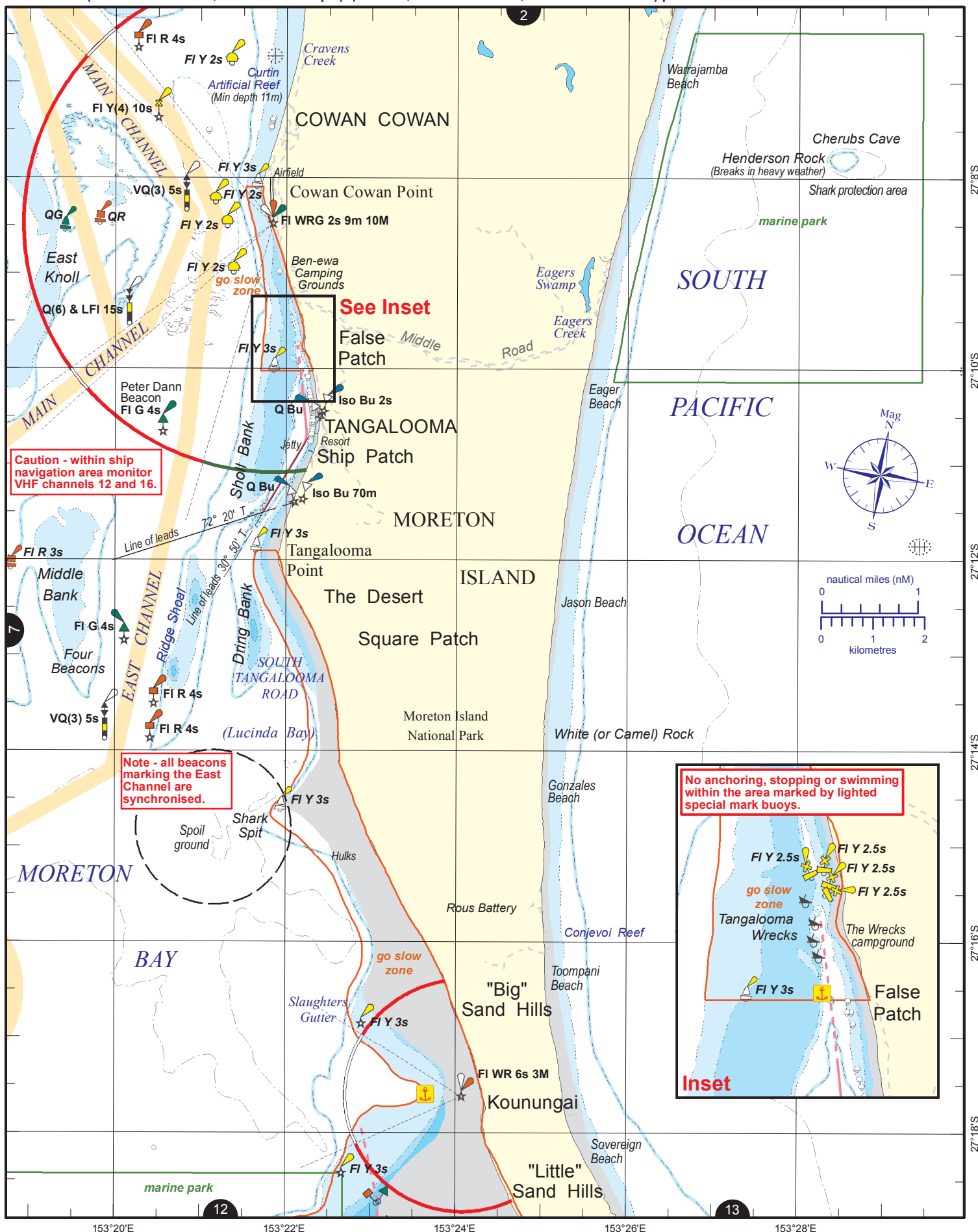
© Copyright The State of Queensland 2014

Queensland Department of Transport and Main Roads - Maritime Safety Queensland.

To reproduce any map within this series, see terms and conditions at Maritime Safety Queensland's website ([www.msq.qld.gov.au](http://www.msq.qld.gov.au))

Nautical information current to 16 June 2014.





Always keep a proper lookout when boating.

**Look up and live** for power and cable crossings that may not be shown on these maps due to scale or recent construction.

**CAUTION:** depth contours have not been re-surveyed in most areas since the 2011 and 2013 floods.

**Exercise care when travelling outside suggested navigation tracks.**

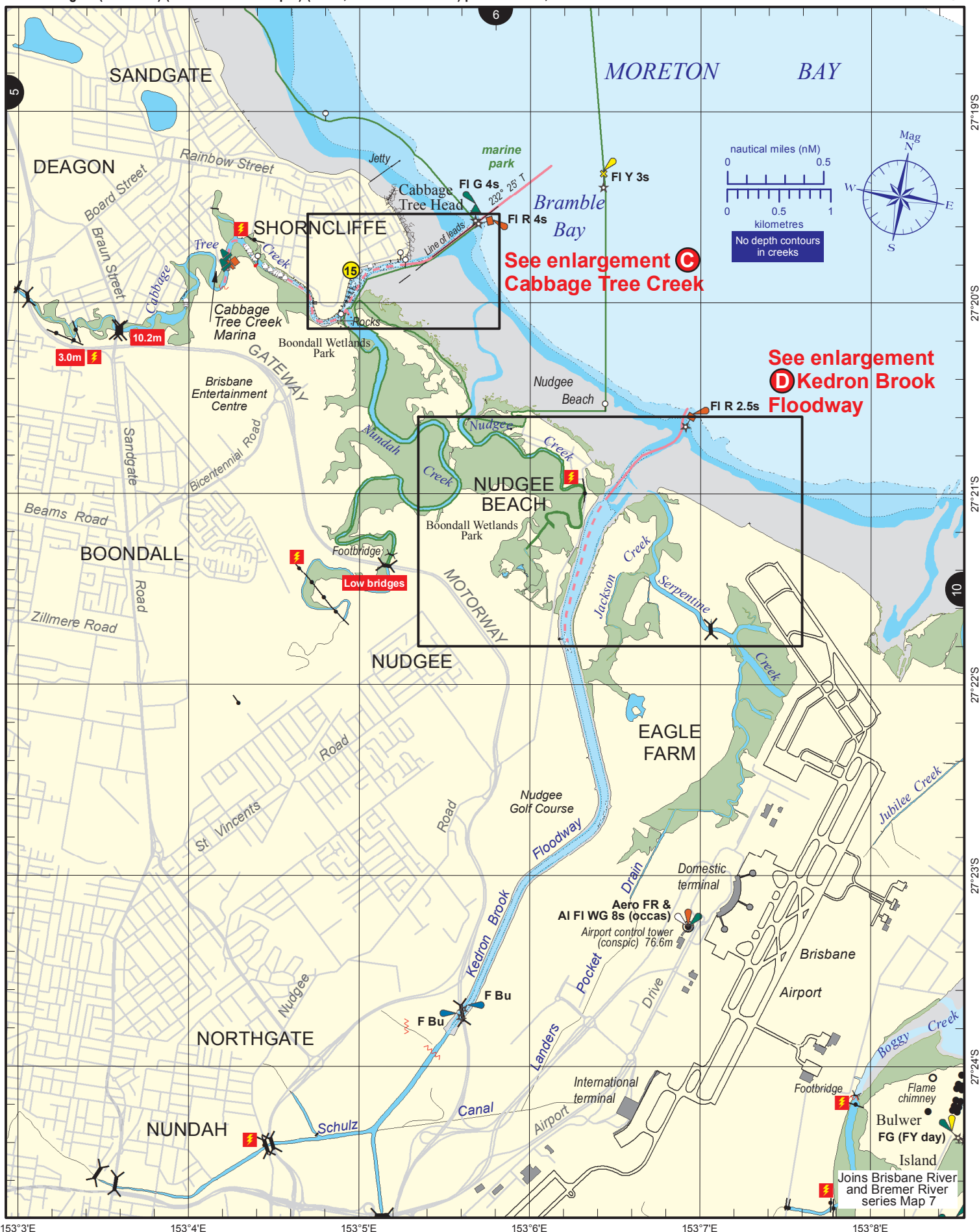
© Copyright The State of Queensland 2014

Queensland Department of Transport and Main Roads - Maritime Safety Queensland.

To reproduce any map within this series, see terms and conditions at Maritime Safety Queensland's website ([www.msq.qld.gov.au](http://www.msq.qld.gov.au))

Nautical information current to 16 June 2014.





Always keep a proper lookout when boating.

**Look up and live** for power and cable crossings that may not be shown on these maps due to scale or recent construction.

**CAUTION: depth contours have not been re-surveyed in most areas since the 2011 and 2013 floods.**

**Exercise care when travelling outside suggested navigation tracks.**

© Copyright The State of Queensland 2014

Queensland Department of Transport and Main Roads - Maritime Safety Queensland.

To reproduce any map within this series, see terms and conditions at Maritime Safety Queensland's website ([www.msq.qld.gov.au](http://www.msq.qld.gov.au))

Nautical information current to 16 June 2014.









Always keep a proper lookout when boating.

**Look up and live** for power and cable crossings that may not be shown on these maps due to scale or recent construction.

**CAUTION: depth contours have not been re-surveyed in most areas since the 2011 and 2013 floods.**

**Exercise care when travelling outside suggested navigation tracks.**

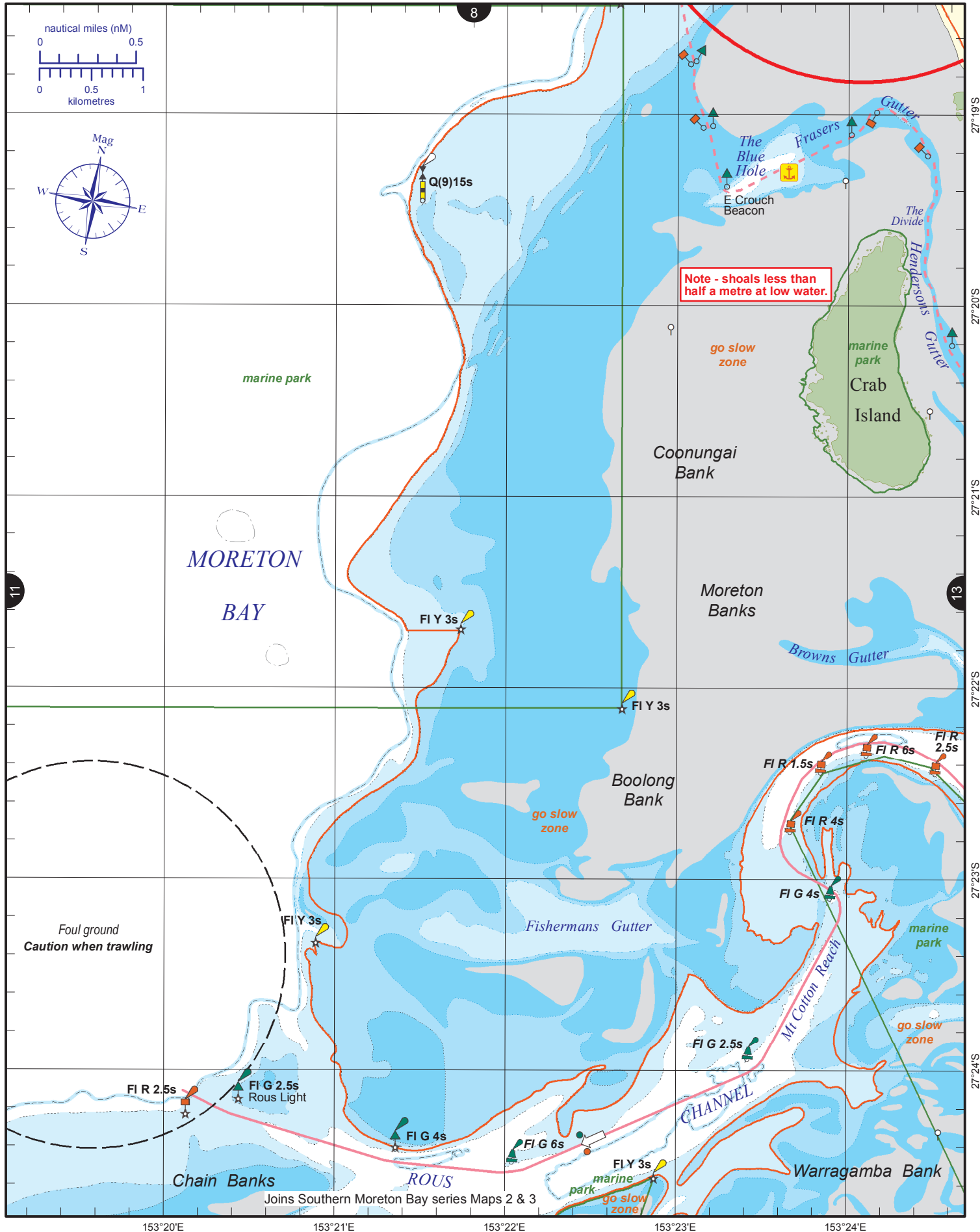
© Copyright The State of Queensland 2014

Queensland Department of Transport and Main Roads - Maritime Safety Queensland.

To reproduce any map within this series, see terms and conditions at Maritime Safety Queensland's website ([www.msq.qld.gov.au](http://www.msq.qld.gov.au))

Nautical information current to 16 June 2014.





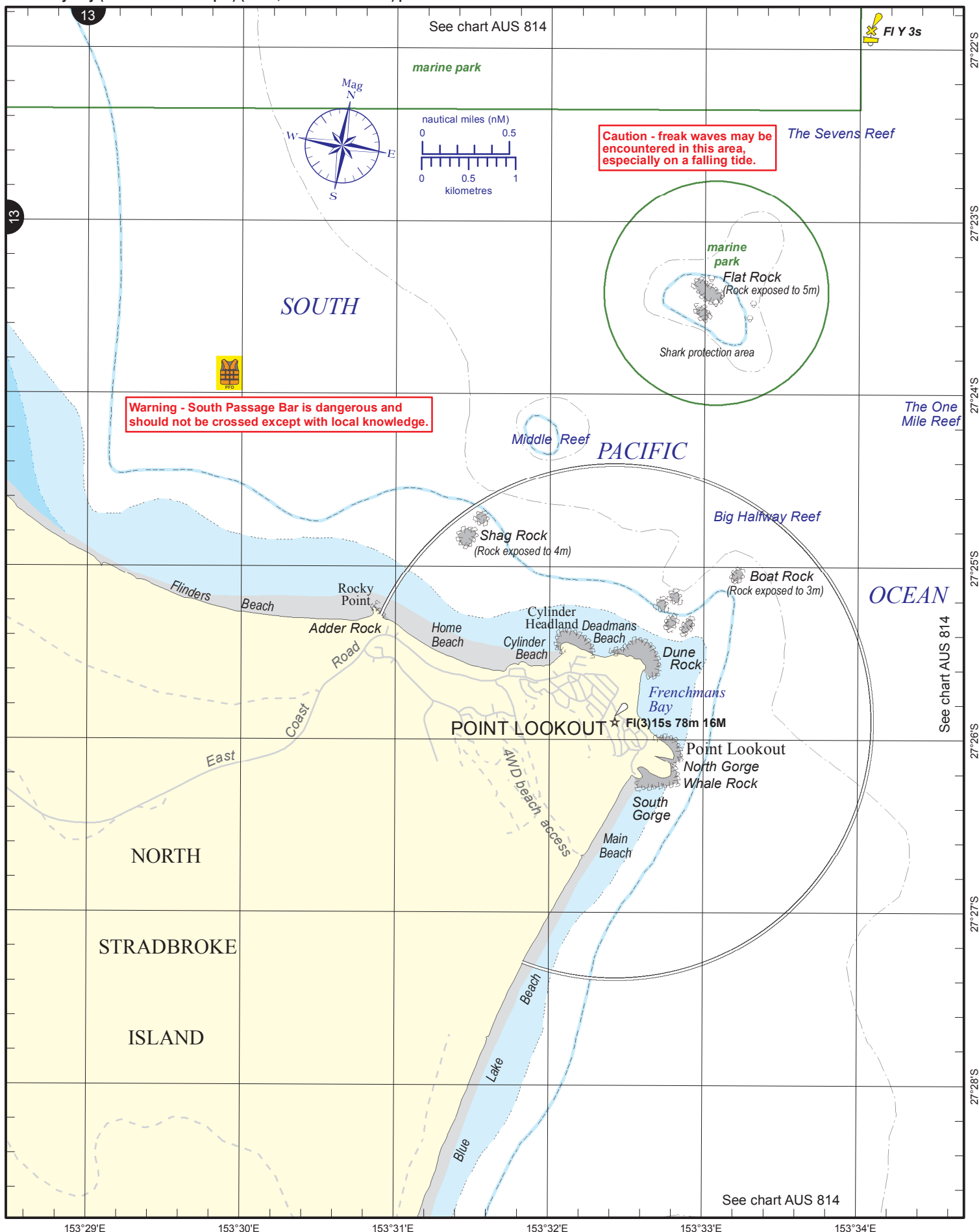
Nautical information current to 16 June 2014.



© Copyright The State of Queensland 2014  
Queensland Department of Transport and Main Roads - Maritime Safety Queensland.  
To reproduce any map within this series, see terms and conditions at Maritime Safety Queensland's website ([www.msg.qld.gov.au](http://www.msg.qld.gov.au))







Always keep a proper lookout when boating.

**Look up and live** for power and cable crossings that may not be shown on these maps due to scale or recent construction.

**CAUTION: depth contours have not been re-surveyed in most areas since the 2011 and 2013 floods.**

**Exercise care when travelling outside suggested navigation tracks.**

© Copyright The State of Queensland 2014

Queensland Department of Transport and Main Roads - Maritime Safety Queensland.

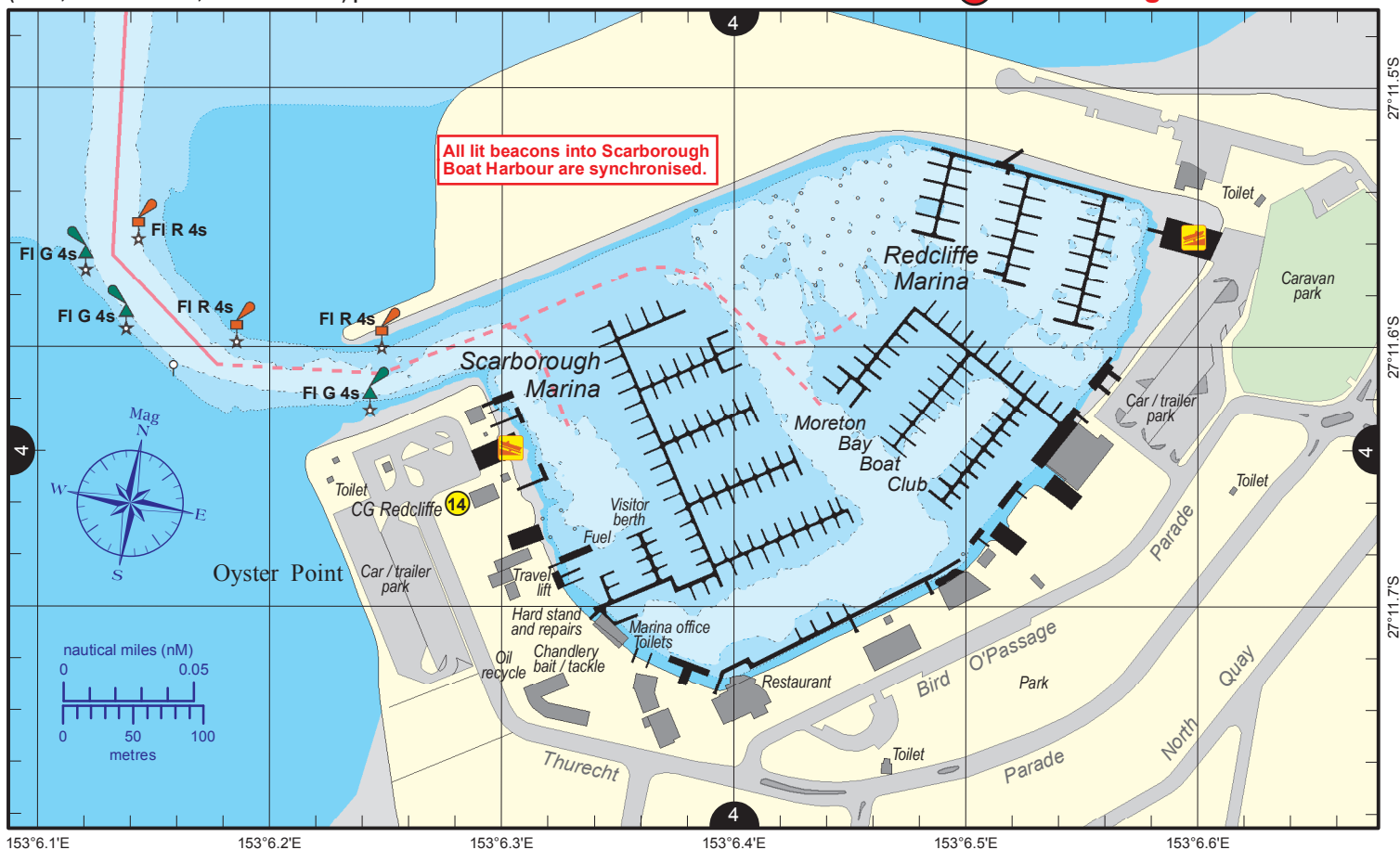
To reproduce any map within this series, see terms and conditions at Maritime Safety Queensland's website ([www.msq.qld.gov.au](http://www.msq.qld.gov.au))

Nautical information current to 16 June 2014.



CG Redcliffe (0600 – 2100 Mon - Thur, 24 hours w/e (Fri 0600 - Sun 2100))  
(88-91, 16-67-21-73-81, 4125-2182-2524) ph 3203 5522

## A Scarborough Boat Harbour



CG Redcliffe (0600 – 2100 Mon - Thur, 24 hours w/e (Fri 0600 - Sun 2100))  
(88-91, 16-67-21-73-81, 4125-2182-2524) ph 3203 5522

## B Newport Marina



Always keep a proper lookout when boating.

**Look up and live** for power and cable crossings that may not be shown on these maps due to scale or recent construction.

**CAUTION:** depth contours have not been re-surveyed in most areas since the 2011 and 2013 floods.

**Exercise care when travelling outside suggested navigation tracks.**

© Copyright The State of Queensland 2014

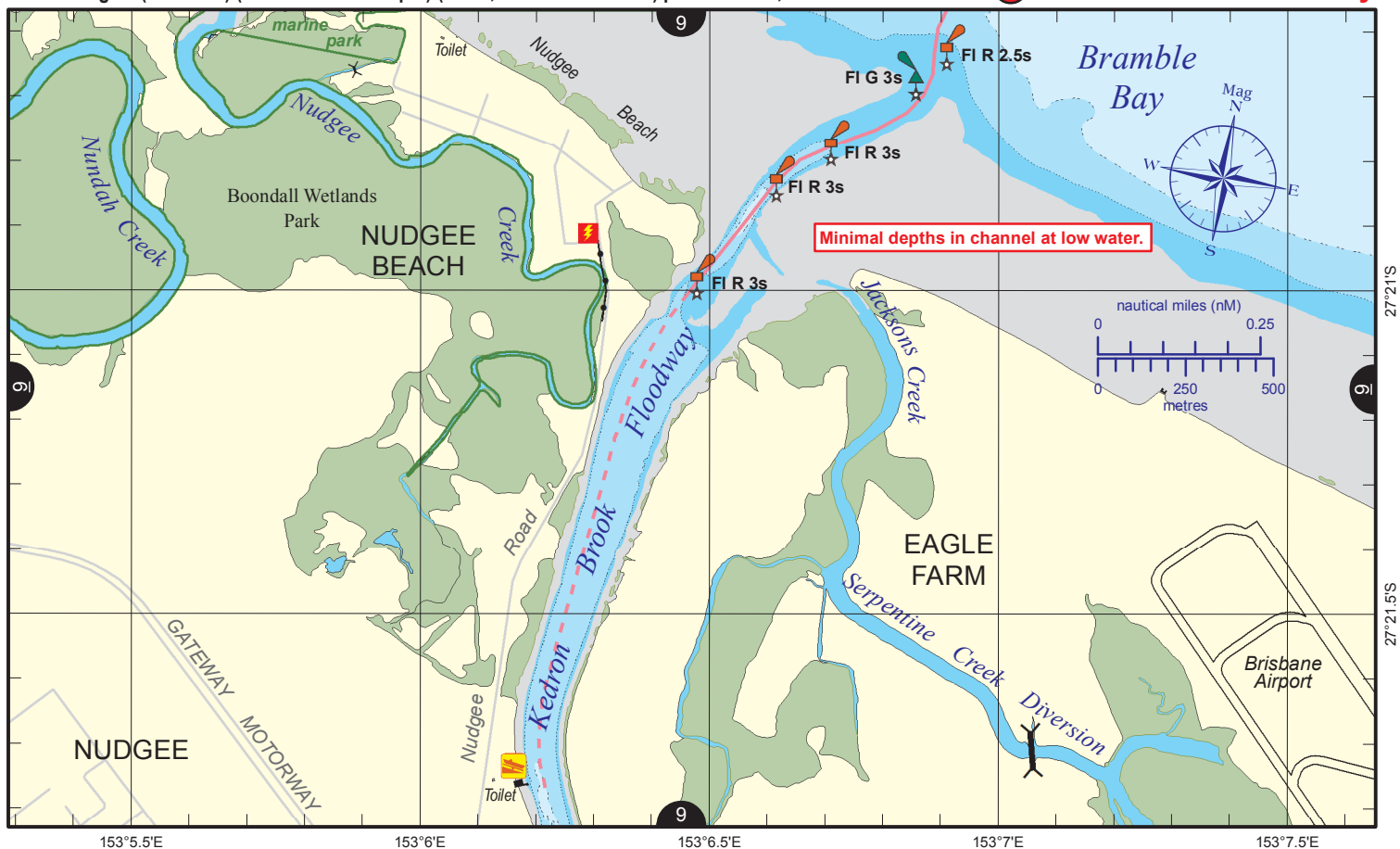
Queensland Department of Transport and Main Roads - Maritime Safety Queensland.

To reproduce any map within this series, see terms and conditions at Maritime Safety Queensland's website ([www.msq.qld.gov.au](http://www.msq.qld.gov.au))

Nautical information current to 16 June 2014.







Nautical information current to 16 June 2014.

**Look up and live** for power and cable crossings that may not be shown on these maps due to scale or recent construction.

**CAUTION:** depth contours have not been re-surveyed in most areas since the 2011 and 2013 floods.

**Exercise care when travelling outside suggested navigation tracks.**

© Copyright The State of Queensland 2014

Queensland Department of Transport and Main Roads - Maritime Safety Queensland.

To reproduce any map within this series, see terms and conditions at Maritime Safety Queensland's website ([www.msg.qld.gov.au](http://www.msg.qld.gov.au))

